

JURA BEDIC

Natural forms

A principal instructor in the Florence Academy of Art's drawing program, Jura Bedic brings a classical style and technique to his figures and still lifes that has been years in the making.

"The success of a realistic painting does not depend merely on copying a

subject," says Bedic. "I believe it needs to offer the textures, colors and tones to one's eye and become something more than just an illusion. Through an evolutionary process, painting again becomes a part of nature itself."

Working at the Academy has afforded

Bedic the opportunity to constantly be in an artistic mode through talking about his work, seeing other people's paintings and working on his own paintings in his studio.

"What inspires me the most is the environment I live and paint in," says Bedic. "My colleagues and their skilled

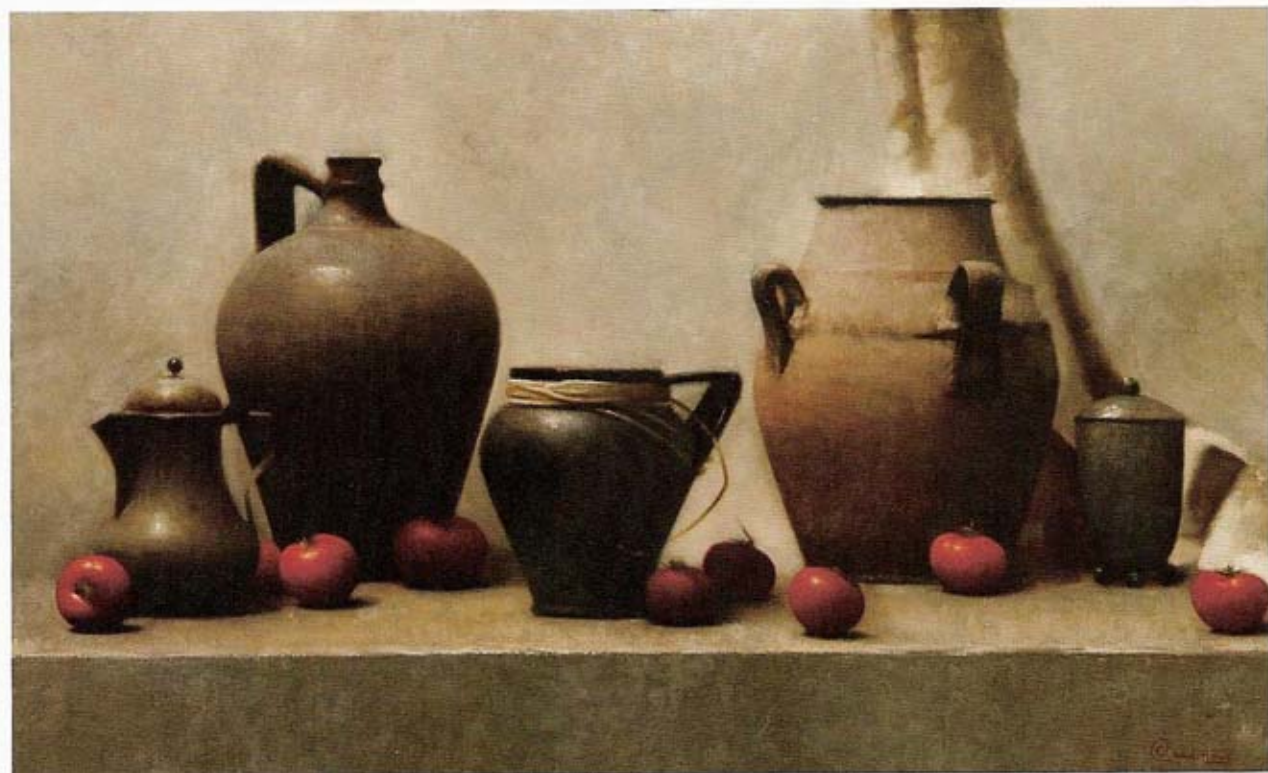


◀ MOIRAI, OIL ON CANVAS, 48 X 70"

DAWN, OIL ON CANVAS, 28 X 31"



POMMES, OIL ON CANVAS, 8 X 10"



RED COMPOSITION, OIL ON CANVAS, 20 X 31"



PANDORA, OIL ON CANVAS, 80 X 40"



GIRL WITH THE WHITE TURBAN,
OIL ON CANVAS, 14 X 8"

works are certainly inspiring. I also think that one is not supposed to wait for an inspiration to come by itself. For me, one painting inspires the next one, so at the end of the day, the best way to produce good paintings is to just be painting continuously."

Bedic is also inspired by the beauty and old-world quality of the city of Florence itself and the art history that exists around him.

"I want people to see a love of beauty more than anything in my work," says Bedic. "But also that the painting is not only supposed to be a beautiful image. A good painting has to offer a great variety of textures that are a result of a painter's reaction to the subject matter, which can only come through when one paints from nature, pursuing the light, color and atmosphere."

When it comes to technique, Bedic follows the classical style, based more on brushwork and understanding value and color relationships.

"One of the guiding thoughts for me while I'm painting is that I need to think about drawing with values and using brush work in a sculptural way to explain forms in space," says Bedic. "I also don't like using too much medium and the drying kind of paint allows me to work in my special way." ●